

Everybody Stomp !

Hans Reidel
A Chorus



B



57

mf

Musical staff 57-61 in treble clef, key of D major. It features a rhythmic melody with eighth and sixteenth notes. The dynamic marking *mf* is placed at the end of the staff.

62

Musical staff 62-66 in treble clef, key of D major. It continues the melodic line with various note values and rests.

C Verse

67

f *mf*

Musical staff 67-72 in treble clef, key of D major. It begins with a measure of rest, followed by a melody. Dynamic markings *f* and *mf* are present.

73

f *mf*

Musical staff 73-78 in treble clef, key of D major. It features a melody with dynamic markings *f* and *mf*.

79

f

Musical staff 79-84 in treble clef, key of D major. It continues the melodic line with dynamic marking *f*.

Posaune - Klarientten Trio - Klavier - Verse - Banjo 2x Chorus

Klarinette

85

Musical staff 85-90 in treble clef, key of D major. It features a melody with dynamic markings *p* and *f*.

91

Musical staff 91-96 in treble clef, key of D major. It continues the melodic line.

97

Musical staff 97-102 in treble clef, key of D major. It features a melody with dynamic markings *p* and *f*.

103

Musical staff 103-108 in treble clef, key of D major. It continues the melodic line.

110

Musical staff 110-115 in treble clef, key of D major. It features a melody with dynamic markings *p* and *f*.

Saxophon

117



123

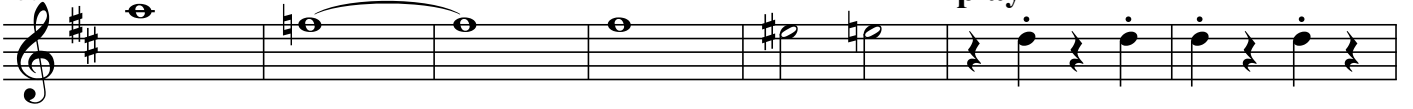


129



tacet

136



play

143



149



154



159



tacet

165



play

170



mf



Oliver Schluß