

# Money Blues

Hans Reidel

♩=170

**A**

Musical notation for section A, measures 1-20. The piece is in 4/4 time. Measures 1-4 start with a treble clef, a key signature of one sharp (F#), and a dynamic marking of *f*. Measures 5-8 have a dynamic marking of *mf*. Measures 9-20 continue with the same key signature and dynamic markings, featuring various rhythmic patterns and rests.

**B**

Musical notation for section B, measures 21-39. Measures 21-31 start with a dynamic marking of *f*. Measures 32-39 continue with the same key signature and dynamic markings, featuring various rhythmic patterns and rests.

**C**

Trompete

**22**

**D**

Klarinette

**12**

Musical notation for parts C and D, measures 22 and 12. Part C (Trompete) is marked with a double bar line and a repeat sign. Part D (Klarinette) is marked with a double bar line and a repeat sign.

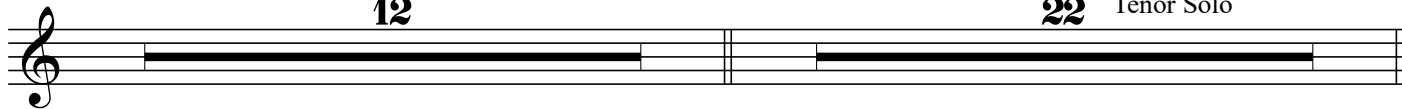
E

F

12

22

Tenor Solo



G



114



119



124



129

